

PART OF THE NW. 1/4, OF SECTION 23, T.5N., R.2W., S.L.B. & M.  
RUSSELL ESTATES SUBDIVISION SECOND AMENDMENT

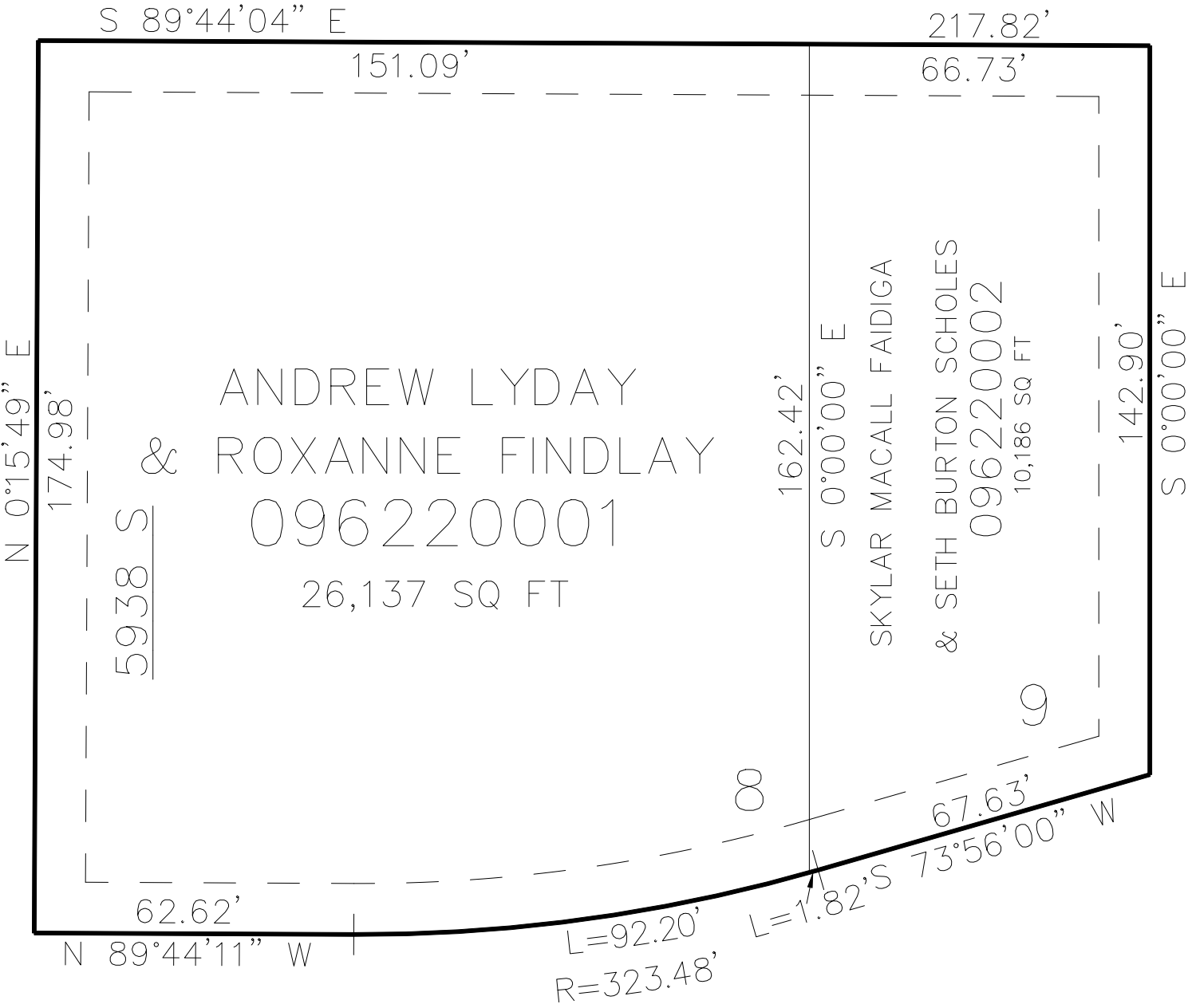
622

TAXING UNIT: 41

IN ROY CITY  
SCALE 1" = 30'

SEE PAGE 123

2575 WEST



SEE PAGE 564

5950 SOUTH

10' UTILITY & DRAINAGE EASEMENTS EACH  
SIDE OF PROPERTY LINES AS INDICATED  
BY DASHED LINES EXCEPT AS OTHERWISE  
SHOWN.

FOR COMPLETE ENG DATA SEE  
ORIGINAL DEDICATION PLAT IN  
BOOK 84, PAGE 46 OF RECORDS.